

REPLACING TONER CARTRIDGE TN450

PREMIUM
tone™

Toner cartridge

A new toner cartridge can print approximately 2600 (high yield cartridge) A4 or Letter size single-sided pages at 5% coverage.

Note

- The amount of toner used varies according to what is printed on the page and the print density setting.
- If you change the print density setting for lighter or darker printing, the amount of toner used will change.
- Wait to unpack the toner cartridge until immediately before you put it into the printer.

TONER LOW MESSAGE : The Toner LED will turn on for 2 seconds and off for 3 seconds.

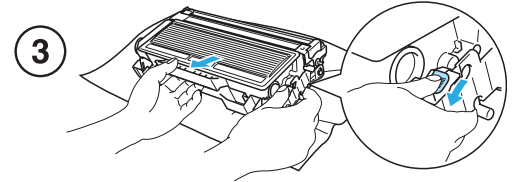
TONER LIFE END MESSAGE : The printer will stop printing until you replace the toner cartridge with a new one.

Note

- The Toner LED will blink continuously if the toner cartridge is nearly empty.

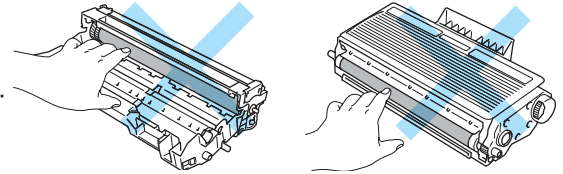
REPLACING THE TONER CARTRIDGE

- 1- Press the front cover release button and then open the front cover.
- 2- Take out the drum unit and toner cartridge assembly.
- 3- Push down the blue lock lever and take the toner cartridge out of the drum unit.



CAUTION!

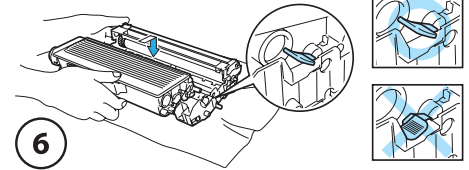
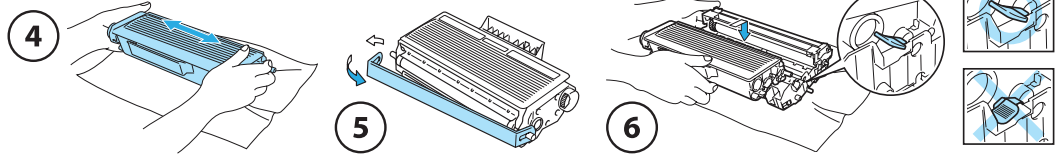
- Handle the toner cartridge carefully. If toner scatters on your hands or clothes, shake it off (do not wipe off) and wash your hands in cold water.
- To avoid print quality problems, DO NOT touch the shaded parts shown in the illustrations.



- 4- Unpack the new toner cartridge. Hold the cartridge level with both hands and gently rock it from side to side five or six times to spread the toner evenly inside the cartridge.

- 5- Pull off the shipping protector.

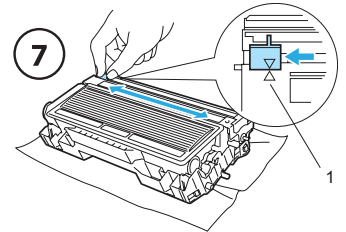
- 6- Put the new toner cartridge firmly into the drum unit until you hear it lock into place. If you put it in properly, the lock lever will lift automatically.



CAUTION!

- Make sure that you put in the toner cartridge properly or it may separate from the drum unit.

- 7- Clean the primary corona wire inside the drum unit by gently sliding the blue tab from right to left and left to right several times.



CAUTION!

- Be sure to return the tab to the home position (▲) (1). If you do not, printed pages may have a vertical stripe.

- 8- Put the drum unit and toner cartridge assembly back in the printer. Close the front cover.

PLEASE READ THIS FIRST BEFORE INSTALLING THE NEW CARTRIDGE!

This procedure can be used to maximize the usage of your cartridge or if the lights or messages are still appearing after replacing the cartridge.

TN450 TONER RESET PROCEDURE

The gear on the cartridge did not reset correctly and the «replace toner» message remains. The reset can be performed manually but please make sure that you are not using a «Starter» cartridge.

Solution :

MFC MODELS WITH NUMERIC KEYPADS 7360, 7360N, 7460DN, 7470D, 7860DN, 7860DW

Open the front cover to the toner/drum section of the printer. / TN450 high yield toner: Press the « CLEAR/BACK » button. / The following message should appear in the LCD display « REPLACE DRUM? 1. YES 2. NO ». DISREGARD THIS MESSAGE. / Instead, press « * 0 0 » buttons on the numeric keypad and press « OK » button. / Wait 2 seconds and the display will indicate « COVER OPENED ». / Close front cover. Printer is now ready to print.

DPC MODELS WITHOUT NUMERIC KEYPADS 7055, 7057, 7057E, 7060D, 7065DN, 7070DW, HL-2280

TN450 high yield toner: Press the « CLEAR » button, press the « START » button, and press « ARROW UP » or « ARROW DOWN » button to display « 0 0 » on the LCD display. Then press the « OK » button. / The message « ACCEPTED » should be appear on the LCD display. / After 2 seconds, « COVER OPEN » will appear on the LCD display. / Close the front cover. The operation is now completed.

HL SERIES 2130, 2220, 2230, 2240, 2240D, 2250DN, 2270DW

Turn off power to the printer. / Open the front cover to the toner/drum section of the printer. / Press and hold the « GO » button while turning on power to the printer. / Release the « GO » button after Toner, Drum, Error LEDs turn on with the « READY » LED turn off. / Press the « GO » button 2 times (the Toner, Drum and Error LEDs will turn ON). / Press the « GO » button 7 times for TN450. / Wait for the « ERROR » LED to start flashing, and close the front cover. / The operation is now completed.