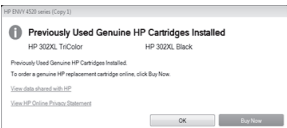

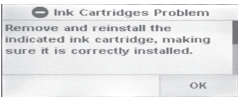


PREMIUM
ink™

Instruction manual

Important :

1. The black and the color printheads are dedicated to their own ink cartridges. **MIXING PRINTHEADS WILL CREATE PRINTER MALFUNCTIONS AND PRINT FAILURE.**
2. This is a remanufactured products. When installing this product, printer alerts may differ from the ones you get from using original cartridges.

Installed remanufactured cartridge	Cartridge low	Cartridge runs out
<p>When installing the cartridge, a reminder will appear on the printer screen "previously used genuine HP cartridges installed."</p>	<p>To maintain the best printing performance, it is suggested to change the cartridge when the ink volume of cartridge is low.</p>	<p>When the printer prompts the message "Ink cartridges problem" or "cartridges low", this indicates that cartridge has run out of ink. A cartridge replacement is needed. This is not a quality issue.</p>
		

Installation Guide for Premium Ink cartridges

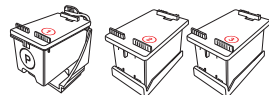
Notice : Please note that one of the ink cartridge ① is already attached to the **REUSABLE** printhead. ② They are ready to be installed in the printer. **DO NOT THROW AWAY THE PRINthead** ③ until all 3 cartridges have been used.

PLEASE KEEP THIS MANUAL FOR FUTURE REFERENCE.

1 Reusable Printhead

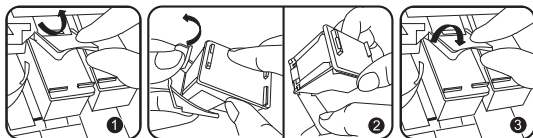


3 Ink Cartridges



First time usage of the product:

1. Remove the old cartridge from the printer.
2. Open the printhead cover and tear off the yellow sealing.
3. Install the new ink cartridge ① with the printhead ② in the printer.



Second or third time usage of the product:

Recommendation : To maintain the best printing performance, it is better to change the ink cartridge when the ink volume of the cartridge is low. (An alert on the printer will be indicated.)

1. Remove the cartridge from the printer.
2. Press the "push" button to take out the empty ink cartridge.
- The printhead ③ is reusable, DO NOT THROW IT AWAY.**
3. Remove the cover of a new ink cartridge. ②
4. Place the new ink cartridge ② on the reusable printhead ③ and press it into the printhead until you hear it click into position. Wipe the printhead nozzles with a soft tissue, 1 or 2 times.
5. Install the new ink cartridge ② with the printhead ③ into the printer.
6. Repeat the process for the installation of the third cartridge ③ when the 2nd ink cartridge is empty.

