

REPLACING TONER CARTRIDGE

TN660

Toner cartridge

A new toner cartridge can print approximately 2600 (high yield cartridge) A4 or Letter size single-sided pages at 5% coverage.

Note

- The amount of toner used varies according to what is printed on the page and the print density setting.
- If you change the print density setting for lighter or darker printing, the amount of toner used will change.
- Wait to unpack the toner cartridge until immediately before you put it into the printer.

TONER LOW MESSAGE : The Toner LED will turn on for 2 seconds and off for 3 seconds.

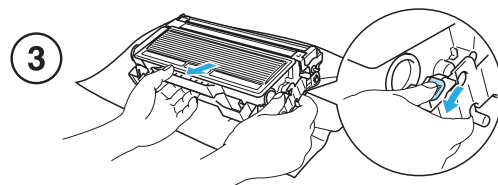
TONER LIFE END MESSAGE : The printer will stop printing until you replace the toner cartridge with a new one.

Note

- The Toner LED will blink continuously if the toner cartridge is nearly empty.

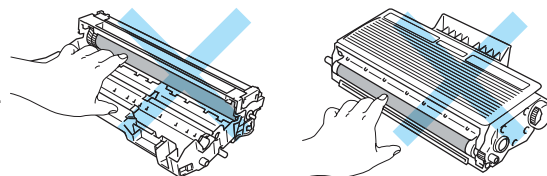
REPLACING THE TONER CARTRIDGE

- 1- Press the front cover release button and then open the front cover.
- 2- Take out the drum unit and toner cartridge assembly.
- 3- Push down the blue lock lever and take the toner cartridge out of the drum unit.



CAUTION!

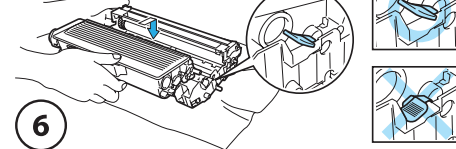
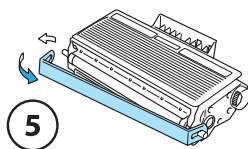
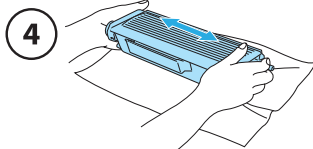
- Handle the toner cartridge carefully. If toner scatters on your hands or clothes, shake it off (do not wipe off) and wash your hands in cold water.
- To avoid print quality problems, DO NOT touch the shaded parts shown in the illustrations.



- 4- Unpack the new toner cartridge. Hold the cartridge level with both hands and gently rock it from side to side five or six times to spread the toner evenly inside the cartridge.

- 5- Pull off the shipping protector.

- 6- Put the new toner cartridge firmly into the drum unit until you hear it lock into place. If you put it in properly, the lock lever will lift automatically.



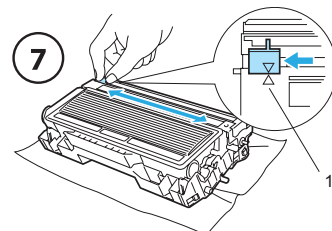
CAUTION!

- Make sure that you put in the toner cartridge properly or it may separate from the drum unit.

- 7- Clean the primary corona wire inside the drum unit by gently sliding the blue tab from right to left and left to right several times.

CAUTION!

- Be sure to return the tab to the home position (▲) (1). If you do not, printed pages may have a vertical stripe.



- 8- Put the drum unit and toner cartridge assembly back in the printer. Close the front cover.

PLEASE READ THIS FIRST BEFORE INSTALLING THE NEW CARTRIDGE!

This procedure can be used to maximize the usage of your cartridge or if the lights or messages are still appearing after replacing the cartridge.

TN660 TONER RESET PROCEDURE

The gear on the cartridge did not reset correctly and the «replace toner» message remains. The reset can be performed manually but please make sure that you are not using a «Starter» cartridge.

Solution :

RESET A MESSAGE « TONER LOW » FOR MONOCHROME PRINTER MFC-L2720 / 2740

Open front toner compartment door. « Door open » will appear on the display. / « Reset menu » will appear on the display. Press up/down arrow to select « TNR-STD-A ». It will ask to confirm the initialisation. / Press « YES » to confirm. / Close the front compartment door and the printer will initialize the « Low toner » message.

RESET A MESSAGE « TONER LOW » FOR MONOCHROME PRINTER DCP / MFC-L2700

Open front toner compartment door. « Door open » will appear on the display. / Press the Erase/back button on the front printer panel. Printer will prompt «replace drum ?». / DO NOT PRESS ON 1. Instead press « *00 » on the numeric keypad. « Accepted » will appear on the display. / Close the front compartment door and the printer will initialize the « Low toner » message.

RESET A MESSAGE « TONER LOW » FOR MONOCHROME PRINTER HL-L2360 / 2365

Open the front cover and leave open while completing the following steps. / Turn the printer off. / Hold the « Go » button while turning the printer on. After 3 seconds release the « Go » button. (User mode) will appear. / Press the « Go » button 9 times. The WiFi led will flash once. / Press the « Go » button 5 times. / Close the cover. Your toner is now reset.