

TOSHIBA



NUTONE
DENSI

Copier Consumables

2019

Catalog

www.nutone-densi.com

INDEX

| | |
|-------------------------------|----------|
| CET Copier Toner | 1 |
| TOSHIBA | 1 |



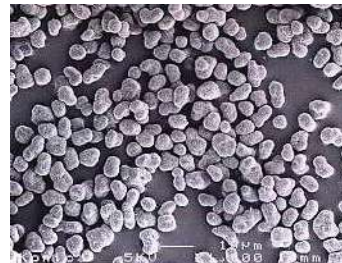
CET Pulverized Toner Manufacturing

On June 6, 2018, CET Group Co., Ltd. (CET Group) announced the establishment of CET Group Japan Inc. at 1 Fukuda-machi, Joetsu City, Niigata, Japan and officially entered into the pulverized toner manufacturing business.

CET Group Japan develops and produces toner, developer and other compatible consumables for printers and copiers. CET Group relies on a strong relationship with Mitsubishi Chemical High-Technology Co., Ltd (MCHT), their vast experience in toner production and development, and their professional technical support to provide global customers with high quality products and services.



CET Group Japan is committed to building strong relationships with customers through the delivery of high quality products with professional, efficient and courteous service. The new expertise of CET Japan in pulverized toner manufacturing will provide a solid foundation for the entire CET Group to confidently enter the new business of toner manufacturing.



The Three Advantages of CET Chemical Toner

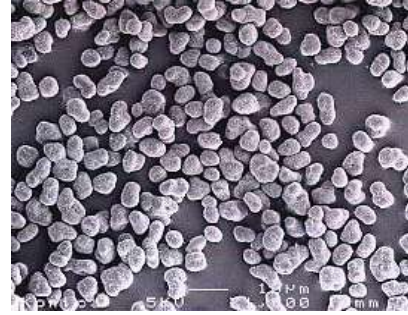
Chemical toners provide a solution to the increasing demand for high-quality color toners in the global market. CET selects the top manufacturers to provide customers with chemical toner products with excellent print quality, stable performance and cost performance. Chemical toner products provided by CET mainly have the following three advantages.

High Image Quality

Chemical polymerized toner is produced through a chemical process that grows or creates smaller and more uniform particles when compared to pulverized toners. These small, uniform toner particles help to produce a higher image quality, especially for fine lines, sharp text, and smooth color gradients.



Traditional Resin Toner Particles



Polymerized Toner Particles

Eco-Friendly

Compared with traditional resin toners, chemical toners require less energy and can reduce carbon dioxide (CO₂), nitrogen oxides (NO_x) or sulfur oxides (SO_x) (emissions that cause the greenhouse effect and acid rain) by about 30%.

Fuse at lower temperatures, Reduce the impact on Environment

Since chemical toner particles are smaller and uniform in size, they fuse or melt at lower temperatures compared with traditional resin toner particles. As a result, the fusing temperature can be reduced about 10°C, using less energy and reducing the environmental impact.

CET chemical toners will further reduce customers' operation cost and increase profits by providing excellent performance and OEM standard quality product.

CET Patented Products

CET Patent Product (CPP) refers to products that have been developed by CET Group Co., Ltd. (CET Group) and have been granted patent rights including patent law protection by the State Intellectual Property Office of P.R.China or the Trademark and Patent Offices of other countries.

As a technology-based enterprise, technology innovation and protection of Intellectual Property (IP) is vital to the CET Group. To date, CET Group has obtained nearly 100 patents, including invention patents, utility model and appearance patents. Patented products give businesses a favorable position in markets facing fierce competition. CET patented products not only bring greater competitiveness to our customers, but also provide a safe environment by avoiding the potential risk of IP infringement.



CET Group also adheres to strict testing standards of all products in order to ensure excellent performance and compatibility. CET Group has implemented international standards of quality management systems in production processes to ensure all CET products achieve OEM equivalent performance. By relying on advanced management methods, strong technical strength and sophisticated testing equipment, CET continuously provides products with higher quality and sets higher standards for the global market.

For TOSHIBA



T-1810C

For use in
E-Studio 181/182/211/212/242
CET PN: CET7456
Weight: 300g/Pc
Estimated Yield@5%:10000Pages
Master Pack:6Pcs



T-2320/2320C/2340

For use in
E-Studio 200L/202L/230/232/280/282
CET PN: CET7457
Weight: 675g/Pc
Estimated Yield@5%:22000Pages
Master Pack:6Pcs



T-4530/T-4530C

For use in
E-Studio 205L/255/305/355/455
E-Studio 205SE/255SE/305SE
E-Studio 355SE/455SE
CET PN: CET7464 (America)
CET7465 (China)
Weight: 700g/Pc
Estimated Yield@5%:30000Pages
Master Pack:6Pcs



T-3520/3520C/4520

For use in
E-Studio 350/352/353/450/452/453
CET PN: CET7463
Weight: 675g/Pc
Estimated Yield@5%:21000Pages
Master Pack:9Pcs



T-4590E

For use in
E-Studio 206L/256/306/356/456/506
CET PN: CET131037
Weight: 700g/Pc
Estimated Yield@5%:36600Pages
Master Pack:6Pcs

For TOSHIBA



T-4590D

For use in
E-Studio 206L/256/306/356/456/506
CET PN: CET7481
Weight: 700g/Pc
Estimated Yield@5%:36600Pages
Master Pack:6Pcs



T-6510/6510D/6000/7200/8550

For use in
E-Studio 550/650/810/520/600/720/850
E-Studio 523/603/723/853/555/655/755/85
CET PN: CET7468
Weight: 1370g/Pc
Estimated Yield@5%:62400Pages
Master Pack:6Pcs



T-8560U

For use in
E-Studio 556/656/756/856
CET PN: CET7473
Weight: 1370g/Pc
Estimated Yield@5%:73000Pages
Master Pack:6Pcs



T-2507D

For use in
E-Studio 2006/2306/2506
E-Studio 2007/2307/2507
CET PN: CET131005
Weight: 240g/Pc
Estimated Yield@5%:10000Pages
Master Pack:12Pcs



T-2507C

For use in
E-Studio 2006/2306/2506
E-Studio 2007/2307/2507
CET PN: CET7470
Weight: 240g/Pc
Estimated Yield@5%:10000Pages
Master Pack:12Pcs

For TOSHIBA



T-2507CS

For use in
E-Studio 2006/2306/2506
E-Studio 2007/2307/2507
CET PN: CET7471
Weight: 126g/Pc
Estimated Yield@5%:5000Pages
Master Pack:12Pcs



T-2309P

For use in
E-Studio 2303A/2303AM/2803AM
E-Studio 2309A/2809A
CET PN: CET131039
Weight: 338g/Pc
Estimated Yield@5%:17500Pages
Master Pack:12Pcs



T-2309C

For use in
E-Studio 2303A/2303A/2803AM
E-Studio 2309A/2809A
CET PN: CET7475
Weight: 338g/Pc
Estimated Yield@5%:17500Pages
Master Pack:12Pcs



T-2309CS

For use in
E-Studio 2303A/2303A/2803AM
E-Studio 2309A/2809A
CET PN: CET7476
Weight: 120g/Pc
Estimated Yield@5%:6000Pages
Master Pack:12Pcs